

NERC STUDENT CAREERS INTENSIVE

13th-14th July 2022, Conference Aston, Birmingham, and online

Your in person joining instructions and programme

Questions? [Email us](#)



Natural Environment Research Council



NEXUSS



PANORAMA



SPHERES

SPITFIRE  Southampton Partnership for Innovative Training of Future Investigators Researching the Environment

STARS  Soils Training And Research Studentships

Contents

Click on the page name in the list below to navigate to the page.

Click on the home symbol at the bottom right of each page to return to this Contents list.

Our online space	3
Getting to the venue	5
At the venue	6
Your overnight accommodation	7
Programme	8
Our panellists and mentors	9
Panel 1 - 13.00-14.00	9
Panel 2 - 14.30-15.30	11
Panel 3 - 16.00-17.00	13
Other panellists and mentors	16
Chair	17
Training sessions	18
9.30-10.30 sessions	18
10.45-11.45 sessions	19
13.00-14.00 sessions	21
13.00-15.00 session	21
14.15-15.15 sessions	22
Our trainers and reviewers	23
Our exhibitors	26

Our online space

We are using a Slack workspace to create a lively online environment for chatting, posing questions and sharing information. No need to wait for the event to start - [you can join the space now!](#)

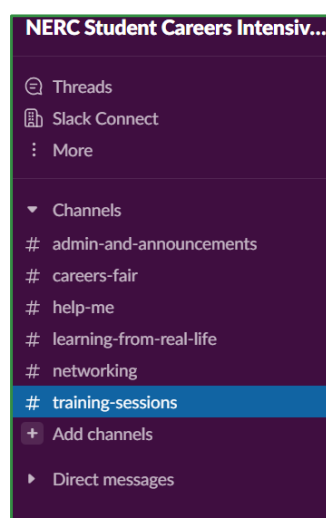
If you've never used Slack before, don't worry it's straightforward. There is plenty of information online including a [getting started guide](#). One of the things you might want to check is that you have set up your [notifications](#), so you can make sure you never miss the posts that are important to you.

We recommend you install the Slack app on your phone so you can keep up to date while you are attending the event: [Android](#) and [iPhone](#)

Profile

When you join the workspace you will set up a [profile](#). There are a few features that you can consider, but please make sure that you use your full name and do please include a photo. This will help people to recognise you in person and on Zoom. It would also be a good idea to complete the 'what I do' field to specify if you are a PhD student (and your research area) or representing an organisation.

Channels



In Slack, we use channels to organise information and chat:

admin-and-announcements – this is where you'll find the timetable, instructions, and big announcements. Only the event team can post to this channel.

careers-fair – each of our organisations will have a post with some info about them, you can post questions to the representatives (use 'reply in thread' on the profile post).

help-me – have a query or a problem? Post it here. Our team will be monitoring this channel throughout the event.

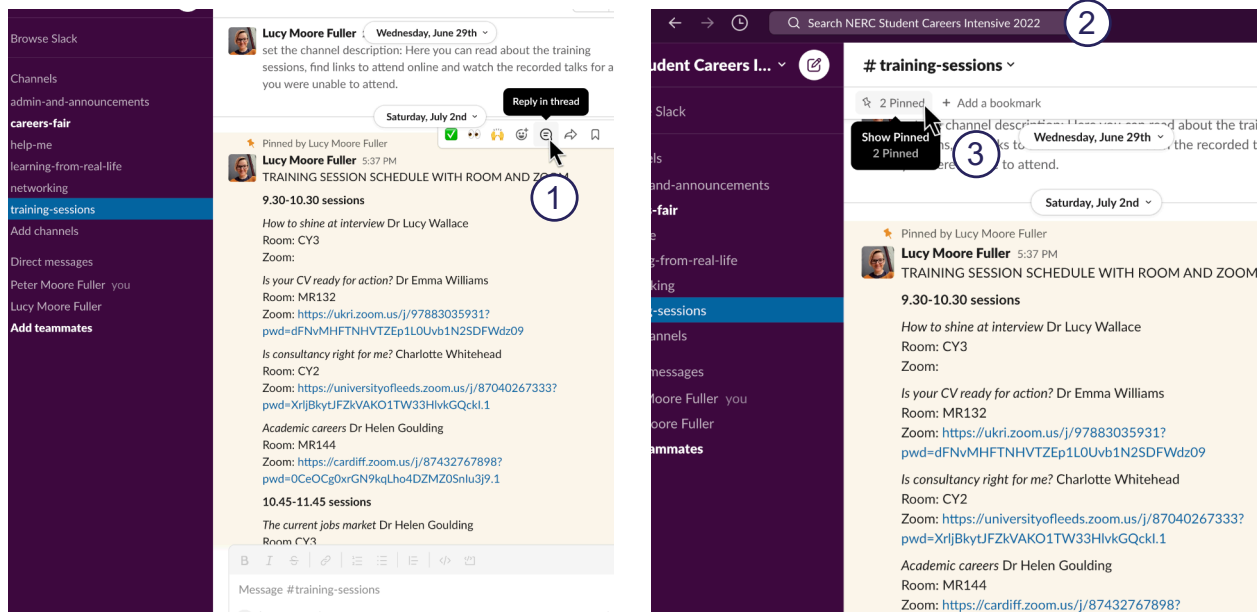
learning-from-real-life – each of our expert panellists will have a post with a photo and bio. You can post questions to the panellist by using 'reply in thread' on their profile post.

networking – an informal chat space. Post some details about yourself, let us know what you are interested in and what you have to offer.

training-sessions – this is where you can find information about the sessions, download associated files and access recordings of any sessions you were unable to attend.



Our online space



A few simple rules and tips

- Make sure you post in the correct channel
- To make everything easy to follow, whenever you are continuing a conversation or commenting on an existing post, use 'reply in/to thread' rather than starting a new post. See **1**
- If you post in the wrong channel or start a new thread unnecessarily, admin may ask you to delete and repost. By keeping conversations organised and on track it helps everyone.
- You can tag people using @ but do not spam people and only use @channel when you need to.
- For group chats, you can use a [group DM](#) or [set up a private channel](#)
- Use the search toolbar at the top of the window to find specific people and posts. See **2**
- Important logistical posts - like room numbers and Zoom links - will be pinned. In the channel, hover your cursor over the panel with the channel name and you will get the option to 'Show pinned'. See **3**
- If someone asks you a question or posts a message, do please respond!
- The workspace is largely unmoderated so if you have any concerns about any posts or the behaviour of any other users, please send a direct message to @Lucy Moore Fuller or email lucy@infohackit.com

THIS IS NOT JUST FOR ONLINE PARTICIPANTS - [JOIN OUR SLACK SPACE!](#)



Getting to the venue

By train

New Street, Snow Hill and Moor Street train stations are all within 10-15 minutes' walk of the venue or a 5-minute taxi journey. Google walking maps from New Street and Snow Hill train stations are available for download from www.conferenceaston.co.uk/WalkWithGoogle

By bus

A number of bus services operate to the University campus throughout the day. For further information, please visit www.nxbus.co.uk/west-midlands where a route planner to the Aston University campus is available.

By car

Parking

Parking is not available at Conference Aston. You are recommended to use the multistorey carpark at [Millennium Point](#)

Birmingham Clean Air Zone

Conference Aston and Millennium Point multistorey carpark are within the Birmingham Clean Air Zone. [Check here](#) if you will need to pay. More information about the [Clear Air Zone](#).



At the venue

On arrival at the event

Visit our **Registration Desk** in the lobby to collect your name lanyard and personal schedule.

[See here](#) for more information about arriving at your accommodation.

Wifi

For the current wifi password, lookout for posters at the venue. We will also have the wifi code displayed at our Registration desk.

Safety information provided by the venue

Please read the following and familiarise yourself with the safety requirements.

Guest entrance and departure: All guests are asked to enter and depart via the allocated entrance and exit doors at the front of the venue. Please sanitise your hands, on arrival, using the stations in the reception area.

Toilet facilities: Suggested toilet facilities are recommended near your meeting rooms, please discuss with your event organiser. Guests are asked to consider social distancing around these areas as appropriate. We recommend delegates take toilet breaks throughout the event rather than waiting for break times, to reduce queuing. If you are staying overnight, you may wish to use your bedroom toilet facility where possible.

Social distancing: Whilst no longer a legal requirement, we do recommend that all guests allow appropriate distancing within the venue, particularly in public areas such as reception, moving through corridors, using public lounge, bar and restaurant areas, and where space may be limited such as public bathrooms.

Face coverings in public areas: From Thursday 27th January 2022, face coverings are no longer legally required in indoor public settings. The wearing of face coverings in public areas is now a matter of personal choice, but we do still recommend that face masks are worn in enclosed or crowded spaces, such as lifts, stairwells and corridors. Face coverings should be worn when traversing public corridors, lifts and stairs within the venue, in line with current government guidance.

Personal hygiene during your stay: Guests are requested to wash their hands, or use sanitizer when a sink is not available in line with government guidelines especially when using the restroom, sneezing, touching the face, blowing the nose, and smoking, eating, and drinking. WHO guidance on handwashing is provided in public handwashing facilities and good practise is to ensure hands are washed or sanitised hourly.

What to do if you develop symptoms at the venue: If you feel unwell at any point, you should alert your event organiser immediately and they will provide your information regarding the arrangements to the venue duty manager.

At all times during your stay at Conference Aston, we expect all guests, delegates and organisers to take responsibility for their own safety and the safety of others through adopting social distancing measures, face coverings, personal health and hygiene, and other precautions as necessary. These should be followed throughout all areas of the hotel and conference venue to help prevent the spread of coronavirus and support in maintaining a safe and welcoming environment for all.



Your overnight accommodation

Staying at Conference Aston

Directions

See [getting to the venue](#)

Checking in

Arriving on 12th

Check in from 14.00 at Conference Aston hotel front desk.

The restaurant will be open for dinner, there are plentiful other choices in the area. Breakfast on 13th will be served from 7.00 to 9.00 in the Courtyard Restaurant.

Arriving on 13th or transferring hotels

You can leave your luggage in room 122 - when you register this will be indicated to you.

At 17.30, collect your room key and luggage from room 122. Breakfast on 14th will be served from 7.00 to 9.00 in the Courtyard Restaurant.

Checking out

Return your room key to the hotel front desk.

Between 8.30 and 9.15, drop off your luggage in the dedicated area of room 144. IMPORTANT this room will be in use during the training session time slots and you will not be able to access your luggage. If you need to leave before 3.15, make sure you collect your luggage during a break, or leave your luggage at the hotel front desk.

Staying at Clayton Hotel

Albert Street
Birmingham
B5 5JE

Directions

[Get directions on Google maps](#)

Parking

There is no parking at Clayton Hotel. The hotel will validate parking at Selfridges Moor Street for a guest rate of £14. Alternative parking is available at [Millennium Point](#) and [NCP High Street](#). [More information](#).

Checking in

Check in from 15.00. Breakfast on 13th will be served from 6.30 to 10.00. You will be asked to book a time at check in.

Checking out

On 13th

Check out by 11.00. See [above](#) for details if you are transferring to Conference Aston



Programme

Day 0 - 12th July

14.00/15.00 Check in for participants staying overnight on 12th; collect your keys from hotel

Breakfast will be served at 7.00-9.00 (Conference Aston) and 6.30-10.00 (Clayton) the following morning

Day 1 - 13th July

10.00-10.30 Registration; entrance lobby

If you have luggage you can leave it in room 122

Throughout the conference you can find help at the Registration Desk or by posting to the help-me channel on Slack

10.30-11.45 Getting the most out of your Careers Intensive experience; Conference Room 1

11.45-13.00 Lunch; Courtyard Restaurant

13.00-17.30 Learning from real life panellist and mentoring sessions; Conference Room 1

Mentoring sessions will take place in separate rooms as indicated on your personal schedule.

13.00-14.00 Panel 1

14.00-14.30 Small group mentoring

14.30-15.30 Panel 2

15.30-16.00 Small group mentoring and refreshments

16.00-17.00 Panel 3

17.00-17.30 Small group mentoring

17.30-19.00 Free time, get keys to your accommodation and collect your luggage from room 122

19.00-20.00 Networking; Courtyard Lounge

20.15 to end Dinner; Courtyard Restaurant

Day 2 - 14th July

9.00-9.30 Arrival tea/ coffee in the Courtyard Lounge

9.30-3.30 Careers fair; Courtyard suites 1&4

ADAS, Nature Positive and RSK Carbon & Sustainability are also happy to review CVs on a drop in basis - you just need to take along a printed copy

10.00-14.00 Photographer available for drop-in headshots at careers fair

11.45-13.00 Lunch, Courtyard Restaurant

9.30-15.15 Training sessions See [training schedule](#) and your personal schedule for room details

9.30-10.30 Training session 1 & Mock interviews / CV reviews

10.45-11.45 Training session 2 & Mock interviews / CV reviews

13.00-14.00 Training session 3 & Mock interviews / CV reviews

14.15-15.15 Training session 4 & Mock interviews / CV reviews

If you are attending a scheduled CV review, please go to room 142 before your session to book your personal time slot. Don't forget your printed CV!

For mock interviews and CV reviews, at your timeslot, wait outside room 142 and the interviewer/ reviewer will invite you in when they are ready.



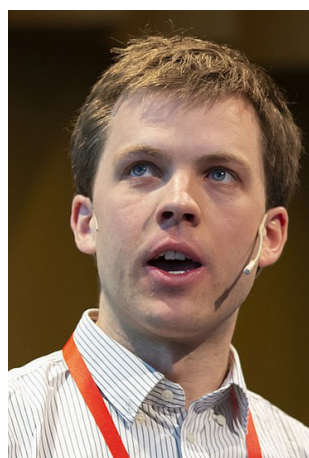
Our panellists and mentors

Panel 1 - 13.00-14.00



Dan Evans, Cranfield University

Dan Evans holds a 75th Anniversary Research Fellowship as a Soil Scientist at Cranfield University's Soil and Agrifood Institute. He leads both fundamental and applied research, principally focusing on soil formation, and the parent materials from which soil is formed. His research programme comprises three core components: (1) investigating the interactions that take place between soils and soil parent materials; (2) exploring the threats of local perturbations to the stock, health, and functioning of soil parent materials, and the ways of protecting these to safeguard future soil formation; and (3) identifying smart, efficient, and innovative techniques to accelerate rates of soil formation, including the use of bioengineering. Dan is the Early Career Scientist Representative for the EGU's Soil System Sciences division, and former National Early Career Researcher Officer for the British Society of Soil Science.



Sam Hatfield, European Centre for Medium-Range Weather Forecasts

Sam Hatfield is a scientist in the Research Department of the European Centre for Medium-Range Weather Forecasts and is based in Reading. Sam's research, currently funded by the ESiWACE2 program, focuses on several areas in numerical weather prediction, data science and high-performance computing, most notably the effective use of supercomputers to perform very high-resolution simulations of the Earth-system. Such simulations are expected to deliver a step-change in the quality of weather forecasts over the next decade but are extremely computationally demanding. Sam first studied physics at the University of Bristol before completing his PhD at the University of Oxford under the NERC Environmental Research DTP, graduating in 2020.



David Hetherington, ARUP

Dr David Hetherington is an Associate and the Water Insight Leader in the global engineering, science and design consultancy firm Ove Arup and Partners. He also holds a position as a Professor of Practice in the Department of Civil Engineering at Newcastle University. David has over 20 years of practical experience in undertaking technical work as part of river basin restoration and conservation globally. He is Chartered Water and Environmental Manager, Scientist, Environmentalist and Geographer with a PhD in Fluvial Geomorphology and Remote Sensing.



Our panellists and mentors

Panel 1 continued



Kaja Milczewska, UK Health Security Agency

Dr Kaja Milczewska completed her PhD in Atmosphere, Oceans and Climate from the University of Reading in May 2021, and has worked as an Environmental Public Health Scientist at UKHSA since then. Her PhD topic was air quality forecasting and meteorology, but her current research interests span a range of topics: from indoor and outdoor air pollution modelling, to public health and climate change. Outside of work, Kaja is most likely to be found running on local trails.



Keely Mills, British Geological Survey

Dr Keely Mills is a geoscientist at the British Geological Survey, and holds undergraduate and postgraduate degrees (MSc, PhD) in geography. Her scientific research focusses on the impacts of people and long-term changes in hydro-climate on freshwater water quality and quantity in low latitude lake systems. Recently Keely has been seconded into a role with the BGS Executive, providing strategic scientific support to the senior management team. She is involved in many professional aspects of science, including leading the Equality, Diversity and Inclusion programme and Research Ethics at BGS, acting as an editor for Climate of the Past, and supporting the scientific community with roles on the councils of the International Society for Diatom Research and Past Global Changes.



Libby Robinson, RSK

Dr Libby Robinson joined as a consultant in RSK's carbon and sustainability team in 2021 whilst finishing her PhD at the University of Southampton. During this time she has experience in calculating and auditing carbon footprints for a range of companies, creating carbon management plans to assist emissions reductions and helping clients devise science based targets which are aligned with the goals of the Paris Agreement to limit global warming to 1.5 °C. In addition, Libby is now leading up the climate risk work within our team, and project managing the climate content within Environmental Impact Assessments for a wide range of infrastructure developments including airports, windfarms, solar farms, residential estates and flood defences.



Our panellists and mentors

Panel 2 - 14.30-15.30



Nigel Bourne, Butterfly Conservation

Dr Nigel Bourn is a butterfly ecologist and conservationist, currently Chief Scientist at Butterfly Conservation (UK) following various Conservation Director roles at BC over the last 26 years. This followed a PhD on the Burnet moths of the Inner Hebrides based at Aberdeen University. He has extensive experience of Lepidoptera conservation, survey work, recording schemes and the uses of such citizen science data. He is one of the authors of the 2019 Atlas of Britain & Ireland's Larger Moths.



Isabel Carlisle, Bioregional Learning Centre (BLC)

Isabel Carlisle co-founded and is a co-director of the BLC which focuses on building climate resilience at landscape and systems scale across the South Devon bioregion.

After a long career in the London art world, Isabel redirected her career to creating learning experiences for an environmentally aware future. While working with schools in the East End of London she studied for the Certificate in Education for Sustainability at Schumacher College.

In 2010 Isabel moved to Devon and joined Transition Network as education coordinator. She designed and led two learning programmes: Schools in Transition and One Year in Transition. During that time she also trained in Regenerative Design with the Regenesi Group and is active in networks of regenerative practitioners in Europe and internationally.



Paul Davies, Met Office

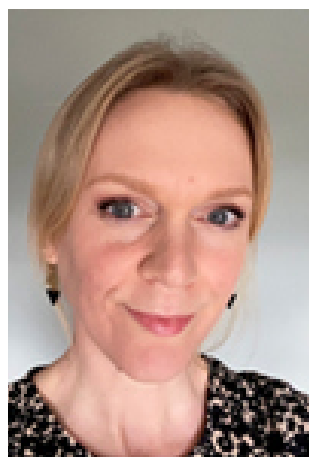
Paul Davies is the Chief Meteorologist and Principal Fellow for meteorology. He is recognised internationally as an authority in the field of operational meteorology. As Principal Fellow, Paul will ensure the Met Office's professional and cultural approach to weather forecasting is globally recognised and to head a respected and valuable operational meteorological profession.

In 2010, Paul created the Met Office's Hazards Centre and was the founder and inaugural Chair of the Natural Hazards Partnership (NHP) comprising 17 partner agencies, government departments and the Cabinet Office. Paul was the lead author to WMO's Multi-Hazard Impact Based Forecasting and Risk Based Warnings guidelines in his capacity as WMO's IMPACT task team chair. Paul later became chair of WMO Commission for Basic Systems (CBS) OPAG Management group for GDPFS ensuring the flow of data and advice is cascaded between global, regional and national systems.



Our panellists and mentors

Panel 2 continued



Jennifer Jennings, NERC

Jen Jennings is an Associate Director at the Natural Research Environment Council where she provides strategic oversight of NERC's investment portfolios in Discovery and Highlight Science and Talent and Skills.

Prior to joining NERC in March 2020 Jen was Deputy Director of Operations (Research and Knowledge Transfer) at the University of Birmingham where she held responsibility for research development, post-graduate training, stakeholder engagement and knowledge exchange. Jen has a PhD in molecular microbiology and has previously held positions in Research and Enterprise Development at the University of Bristol and as an Innovation Manager at BBSRC.



Natalie LeBrun, RSPB

Natalie LeBrun has worked in the environmental sector for over a decade, following completion of her masters in Ecology and Environmental Management at the University of York. She has worked for government bodies such as Natural England and the Environment Agency, as well as consultancies and nature conservation charities. During her time at the RSPB she has worked as a Project Manager on the Humber estuary; as a Policy Officer in the Land, Seas and Climate team managing their water policy advocacy; and as a Senior Policy Officer in the England Policy team leading their local government engagement. She is now working as a Senior Conservation Officer in the West Midlands, securing action for nature through partnership working, casework intervention, and leading a team of staff and volunteers across 7 counties.



Corinne Schuster-Wallace, University of Saskatchewan

Dr Corinne Schuster-Wallace is an Associate Director for Global Water Futures and Associate Professor in the Department of Geography and Planning at the University of Saskatchewan.

Her areas on interest include: Developing practical solutions and community-based tools for evidence-informed decision-making in rural, remote, and marginalised communities, particularly in low resources settings; identifying and spatially analyzing burdens of disease associated with water-related diseases, understanding both social and physical dimensions affecting these patterns, and exploring climate change impacts; and water and sustainable development.



Our panellists and mentors

Panel 2 continued



Thorwald Stein, University of Reading

Dr Thorwald Stein is Associate Professor in Clouds at the Department of Meteorology, University of Reading, and the Director of the Scenario DTP. He studied for his BSc degree at a liberal arts college, University College Utrecht, with a major in maths and physics and a minor in art history. Thorwald was accepted to the MSc programme in mathematics at the University of Warwick in 2003 and went on to do a PhD there as well, studying an idealised system of interacting particles settling at a range of velocities. The applications of his research in atmospheric science enabled him to land a postdoc position at Reading, where he has been since 2008. After working as a postdoc on three more projects, Thorwald was appointed as Lecturer in Clouds in 2015 and promoted to Associate Professor in 2020.

Panel 3 - 16.00-17.00



Simon Clark, science communicator

Simon Clark is a videomaker and science communicator from Bristol, UK, currently based in Bath. He finished his PhD in theoretical atmospheric physics at the University of Exeter, researching dynamical stratosphere-troposphere coupling over the Arctic. Since graduation he has become a full-time science communicator, focusing on YouTube videos about topics in Earth sciences, but also livestreams on Twitch and has written a book, Firmament.



Caroline Cox, Rutherford Appleton Lab

Caroline Cox graduated with a degree in Physics with Space Science from the University of Leicester. Following up on an interest to contribute to the study of Climate Change, she moved to Imperial College to undertake a PhD in the Space and Atmospheric Physics department, where she studied cirrus clouds. Caroline has worked at the Science and Technology Facilities Council for over ten years in the Earth Observation division of the RAL Space department. Her role includes working as part of the Mission Performance Centre for one of the ESA Copernicus missions, Sentinel-3, as well as on other scientific projects. She has been involved in the NERC Imperial DTP since 2020.



Our panellists and mentors

Panel 3 continued



Tom Dijkstra, Loughborough University

Tom Dijkstra is an engineering geologist at Loughborough University. His research interests focus on slope instability analyses in natural and engineered slopes in a context of ongoing climate change. He has extensive field experience throughout Europe, and Central China. He managed the multi-disciplinary UK climate impact forecasting for slopes network (CLIFFS) and was a co-investigator on a sequence of EPSRC funded projects addressing research needs to assess transport infrastructure resilience exposed to geohazards in a changing climate. He is also keenly interested in inter-disciplinary research into human-landscape interactions in dynamic environments in China, Bhutan and Nepal. Following his studies at Utrecht University (NL) Tom was employed at the universities of Leicester, Coventry, Sussex, Royal Holloway and Loughborough, worked at the BGS from 2012-2017 and was self-employed from 2001-2006. Tom is an editor for Engineering Geology, and a Visiting Professor at Lanzhou University (Gansu, China).



Luke Ridley, Defra

Dr Luke Ridley is currently the Head of Water Research at the Department for Environment, Food and Rural Affairs (Defra). He's had several roles in Defra over the last five years, including working on the new Environmental Land Management schemes and in 2018 won the Royal Statistical Society's Champion Award for excellence in official statistics. Before joining the civil service, Luke worked as a post-doctoral researcher at the University of Bristol looking at nutrient pollution from agriculture, and previously at Bangor University measuring carbon budgets of lowland peatlands. He has a PhD from the University of Edinburgh in the biogeochemistry of raised bogs, and before academia he had a varied career, including working as police staff and as a restaurant manager.



Fiona Shuttle, Oxford Sparks

Fiona Shuttle is responsible for managing Oxford Sparks - the University of Oxford's platform for digital science engagement. Oxford Sparks shares and promotes the cutting-edge research taking place at the university, for example through "The Big Questions Podcast", micro-documentaries, and short videos for social media.

Prior to this role, Fiona carried out a DPhil in the University of Oxford's Department of Zoology (through the NERC DTP in Environmental Research), examining the impacts of anthropogenic stressors (such as climate change and the krill fishery) on populations of penguins on the Antarctic Peninsula and surrounding Southern Ocean region. As part of this research, she was heavily involved with the Penguin Watch citizen science project, and is a keen advocate for the use of citizen science as a public engagement tool.



Our panellists and mentors

Panel 3 continued



Willow Smallbone, Dŵr Cymru Welsh Water

Willow Smallbone completed her Ph.D. in Biology from Cardiff University and started work at Dŵr Cymru Welsh Water as a Graduate Data Scientist in 2017. Over the following two years, Willow progressed through a couple of roles within the team and became a Chartered Scientist before becoming the Data & Analytics Manager. Willow manages the Data Science Team, who supports the entire organisation by implementing tools and solutions using data science techniques, to help achieve business objectives. This includes machine learning, artificial intelligence, or statistical models to help manage operational risk or understand customer behaviour, simulation and optimisation to improve processes, or developing applications to collect data and providing a service for colleagues to develop their own skills when it comes to data analysis.



Ben Wöden, UK Trade Remedies Authority

Dr Ben Wöden is Head of Evaluation & Research at the UK Trade Remedies Authority and a Junior Policy Fellow at the University of Cambridge's Judge Business School. He completed a PhD in Chemistry as part of the SCENARIO DTP, based at the University of Reading and in a CASE partnership with STFC, during which he spent a 3-month POST fellowship with the House of Commons' Business, Energy, and Industrial Strategy Select Committee. Before joining the TRA, he worked as a Senior Scientist at the Department for Environment, Food, and Rural Affairs (Defra). There he contributed to the design of the Future Farming and Countryside Programme's Environmental Land Management schemes, including leading the development of the scoring system for applications to the Landscape Recovery scheme.



Our panellists and mentors

Other panellists and mentors

Laura Deeprose, NERC



Albert Chen, Centre for Water Systems

Prof Albert Chen is an Associate Professor at the Centre for Water Systems (CWS), University of Exeter with over 20 years of experience in Water and the Human Environment studies. He has developed a series of modelling tools to analyse the hydrodynamics and the consequences of flood disasters, including both direct and indirect impact to communities and critical infrastructure, as well as the cascading effects of failures. The assessments are therefore used to support decision making in risk management, implementations of mitigation measures, and planning of adaptation strategies in order to enhance societal resilience to flood hazards.



Barry Evans, Centre for Water Systems

Dr Barry Evans is a Senior Research Fellow at the Centre for Water Systems at the University of Exeter working on a variety of international projects covering areas including Flooding, Urban Resilience, System Dynamics, Traffic Modelling, and the Circular Economy of Water. More recently (before returning to the UK) Dr Evans was living in New Zealand working at the School of Built Environment at Massey University where he is co-supervising a PhD student in developing models to analyse the effectiveness of evacuation methods of coastal communities in the event of a Tsunamis utilising SUMO (Simulation of Urban Mobility) software.



Our panellists and mentors

Chair



Francisca Rockey, Black Geographers

Francisca Rockey is an award-winning geographer and campaigner who is regularly involved in social campaigns, and charity fundraising. She is also a writer and public speaker featured in mainstream and online media.

In April 2020, Francisca founded Black Geographers, an online community supporting the next generation of black geographers and geoscientists. The platform has grown to a community of 11k+ individuals and has collaborated with a wide range of organisations from Earth Minutes, Delta Simons, Esri UK, Esmée Fairbairn Foundation, Hudl Youth Development Agency, Natural Environment Research Council to Birmingham University, and The Royal Geographical Society (with IBG).

Francisca

[instagram.com/franrockey](https://www.instagram.com/franrockey)

twitter.com/franciscarockey

<https://www.linkedin.com/in/franciscarockey/>

Black Geographers

[Instagram.com/blackgeographers](https://www.instagram.com/blackgeographers)

[Twitter.com/blackgeogorg](https://twitter.com/blackgeogorg)

<https://www.linkedin.com/company/blackgeographers/>

<https://www.facebook.com/blackgeographers>



Training sessions

9.30-10.30	10.45-11.45	13.00-14.00	14.15-15.15
How to shine at interview Dr Lucy Wallace Room: 145	The current jobs market Dr Helen Goulding Room: 145	Career planning: next steps Dr Helen Goulding Room: 144	Negotiating offers and salaries Dr Helen Goulding Room: 144
Is your CV ready for action? Dr Emma Williams Room: 132 <i>Bring your CV</i>	Effective job applications Charlotte Whitehead Room: Suite 3	Is your CV ready for action? Dr Emma Williams Room: 145 <i>Bring your CV</i>	Building a research idea into a project Dr Bonhi Bhattacharya & Dr Calum Kirk Room: 145
Is consultancy right for me? Charlotte Whitehead Room: Suite 3	Careers in research and impact development Dr Bonhi Bhattacharya & Dr Calum Kirk Room: 144	Fellowships: building a track record Dr Bonhi Bhattacharya & Dr Calum Kirk Room: Suite 3	Starting a business: what you need to know and do Charlotte Whitehead Room: Suite 3
Academic careers Dr Helen Goulding Room: 144	Project management for PhDs Dr Stephanie Smith Room: 132	Communicating your research to different audiences Dr Stephanie Smith Room: 132	
CV / interviews Room: 142 Just before the start of your scheduled session, go to room 142 to complete the sign up sheet with your preferred time slot. At your timeslot wait outside the room. When the interviewer/ reviewer is ready, they will invite you in. Don't forget to bring a printed copy of your CV.			

9.30-10.30 sessions

How to shine at interview - Dr Lucy Wallace, Room: 145

So, you've sent off an amazing job application, and now you have an interview... don't stress, join us to find out what you can do to prepare and how you make sure that you stand out and shine. In this session we will explore all things interview as well as get some practice in small friendly groups, so you will emerge confident and ready to smash it!

Learning outcomes:

The session will focus on building knowledge of the following: how to prepare for an in-person or online interview, interview structure, the importance of first impressions, questions you might get asked, and the types of questions you can ask the interviewer.

Is your CV ready for action? Dr Emma Williams, Room: 132 (Also at 13.00-14.00 in Room 145)

In this interactive session we will look at what it takes to make your CV fit for action! We will look at dos and don'ts of a CV, how to adapt a CV to a job description and different types of CVs. *Please bring a paper copy of your CV to the session.*

Learning outcomes:

- Understand the importance of clear CV formatting
- Understand different types of CVs and when they could be used
- Learn tips and tricks from an experienced CV reviewer
- Understand how to tailor your CV



Training sessions

9.30-10.30 continued

Is consultancy right for me? - Charlotte Whitehead, Room: Suite 3

As a researcher, you have the expertise to be a consultant. However, is self-employment or business start-up the right career choice for you? This session provides a space to think this through.

You'll consider three key questions that need to be answered before you take the leap. We'll explore your personal & professional motivations for wanting to take this route and consider whether you've got what it takes.

We'll then turn our attention to the business itself: What will you actually be doing as a business owner? Which aspects of the business might you be best at? What are you creating when you start a business? And what challenges might you face along the way?

Learning outcomes:

- Understanding your motivations for starting a business and whether it's right for you
- Insight into how your personality might influence your approach to building a business
- Awareness of your responsibilities as a business owner
- A reality check on the challenges of self-employment/business start-up

Academic careers - Dr Helen Goulding; Room: 144

I'll help the you understand the pros and cons of an academic career, including information on:

- The academic career path
- Good and bad reasons for staying in academia
- What's it like doing a postdoc?
- What to look for when choosing a postdoc
- Fellowships and how they can help your career
- Leaving academia after a postdoc -easy or difficult?

Learning outcomes:

Learn what an academic career can offer you, think about whether it will suit you and get some tips for success.

10.45-11.45 sessions

The current jobs market - Dr Helen Goulding; Room: 145

I'll present some recent reports and data about the current jobs market including:

- Trends in the jobs market over the last few years
- The continuing impact of coronavirus on the jobs market
- How and where employers are advertising
- What employers are looking for
- Trends in the assessment process

Learning outcomes:

Build your understanding of the jobs market right now, so you know where to look and so you understand the recruitment process from an employer's perspective.



Training sessions

10.45-11.45 continued

Effective job applications - Charlotte Whitehead; Room: Suite 3

Applying for a job is a job in itself. And it's not something that can (or should) be rushed. It's worth taking a step back to review your approach and check that you're doing everything that you can to submit a strong application.

This session will explain how to do that. You'll learn about the sort of research you need to undertake before you even apply for a job and why this is important. You'll be shown how to analyse a job description and how to communicate your value and fit for the role in supporting statements and CVs. And you'll receive tips on managing the process of applying for jobs.

Learning outcomes:

- Understand the purpose and value of researching job applications
- Learn how to undertake a role and organisation analysis
- Use your analysis to write a compelling supporting statement
- Understand how to communicate your value and fit for the role
- Receive tips for managing the process

Careers in research and impact development - Dr Bohni Bhattacharya & Dr Calum Kirk; Room: 144

This session will discuss careers in research development looking at skills, experiences and activities involved in the roles of research and impact development management

Project management for PhDs - Dr Stephanie Smith; Room: 132

Increasingly, the Project Management sector is hiring PhDs with specialist knowledge to help implement large industry and government scientific projects. Within other sectors (including academia) knowledge of project management techniques is becoming an increasingly vital skill. In this session, you can learn how the concepts of professional Project Management can help you –during your PhD and beyond, and even as a potential Project Manager career.

Learning outcomes:

- Why projects fail and why project management is necessary and important
- The basic terminology and principles of project management
- Skills and tips from experienced project managers
- Career options in project management and how to prepare



Training sessions

13.00-14.00 sessions

Career planning: Next steps - Dr Helen Goulding; Room: 144

We'll work in small groups on next steps to career success including:

- Finding the right job for me: what should I look out for?
- Networking: what's my existing network, where are the gaps, how do I fill them?
- Experience building: if I lack some skills or experience, what can I do?

Learning outcomes:

Create a personal plan to ready yourself for job hunting, including assessing your fit with different jobs, expanding your networking and boosting your experience.

Fellowships: Building a track record - Dr Bohni Bhattacharya & Dr Calum Kirk; Room: Suite 3

This session will focus on candidate track records for those thinking of future research careers. We will discuss what a competitive CV looks like in the context of applying for fellowships looking at publications, small grant funding opportunities and other more narrative elements. Attendees should bring their own CVs to evaluate, and we will explore strategies to identify and improve gaps in track record.

Learning outcomes:

To be able to recognise where your CV may benefit from improvement when considering future research careers.

13.00-15.00 session

Communicating you research to different audiences - Dr Stephanie Smith; Room: 132

The research of PhD students has far-reaching societal and public impact. Conversely, much of this research is funded by the public through tax. It is vital therefore that PhDs become adept at communicating their research, its impact and its significance to different levels of stakeholder in different sectors of society –from child to entrepreneur. In this session, I will invite you to reflect on how communication inside and outside academia is vastly different, consider the perceptions and motivations of your stakeholders, and give some tips on how to engage successfully with a multitude of potential audiences.

Learning outcomes:

- Understand why public engagement is vital to good science
- Identify the bi-directional relationship of research and wider society
- Understand that there is more than one 'public' –and thus more than one communication strategy
- Develop a deeper, more empathetic understanding of how to successfully engage with non-academics



Training sessions

14.15-15.15 sessions

Negotiating offers and salaries - Dr Helen Goulding; Room: 144

I'll help you understand what to look for in offers and where and how you can negotiate, including information on:

- Salaries in recent years
- Benefits and how valuable they are
- Knowing your worth for salary discussions
- What to do if no salary is advertised
- Negotiating a better offer

Learning outcomes:

Learn the language of salary and benefits and explore some strategies for negotiating a higher salary.

How to build a research idea into a project - Dr Bohni Bhattacharya & Dr Calum Kirk; Room: 145

This session will focus on how a research idea might be developed into a small-scale project. We'll work through an example of a research idea and the elements involved in creating an activity out of this idea. We'll cover elements ranging from project timelines and resources to stakeholder analysis and the potential impacts of your research. We'll also consider small funding opportunities which are open to you as PhD students.

Learning outcomes:

To understand the elements which come together to create a research project. To be able to apply this understanding to your own research ideas.

Starting a business: what you need to know and do - Charlotte Whitehead, Room: Suite 3

If you're thinking about becoming self-employed or starting a business, you may be wondering how to get started.

This webinar will talk through some of the basics. You'll find out what sort of infrastructure & resources you might need for your business and gain some insight into what you might have to spend money on (and how much).

That of course raises the question of where the money will come from as you get going and in the longer term. We'll look at that too.

And regardless of whether you intend to be a one-person-band or establish an enterprise, your success will depend on you having the right people around you. We'll give some thought as to who those people might be. Finally, we'll consider some of the actions you can take now in order to get started.

Learning outcomes:

- Knowledge of what you'll need in terms of basic infrastructure
- Insight into costs and where the money might come from
- Consideration of what you might need help with
- Tips for things you can be doing now to get started

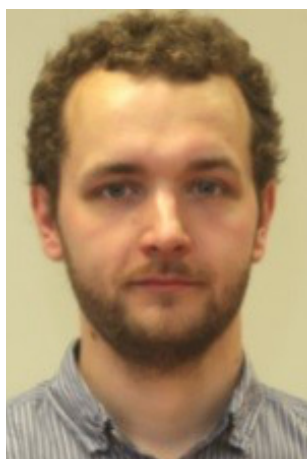


Our trainers and reviewers



Dr Bonhi Bhattacharya

Bonhi is a Research Development Manager at the University of Reading. After completing a PhD in Mathematics, she worked as a research assistant and teaching fellow. Following some years working in Research Intelligence, she moved into Research Development where she works with academics on building research grant projects and applications. She has a particular interest in interdisciplinary research collaborations.



Dr Calum Kirk

Calum is currently an Impact Development Manager at the University of Reading. He started his impact career at Newcastle University in 2018, shortly after completing his PhD. It was during his PhD where he developed his interest in public engagement and the communication of STEM subjects. A career in impact allows him to see the full breadth of a university's research and help it reach the right audiences to have the most influence.



Charlotte Whitehead

Charlotte Whitehead is a UK Registered Career Development Professional (RCDP) who specialises in mid-career transition. She has 16.5 years' experience working in Russell Group universities, ten of which were spent managing a skills development programme for PhD researchers. She has particular interests in supporting early career researchers and clients who are considering self-employment. Her approach to career development is strengths-based. She's a Gallup Certified CliftonStrengths® Coach and is trained in Gallup's entrepreneurial strengths assessment, Builder Profile (BP10). She's also a Masterclass Certified Business Model You® Practitioner. Charlotte has been self-employed since 2015 and actively uses these tools in relation to her own business.



Our trainers and reviewers



Dr Emma Williams

Dr Emma Williams is on a mission to enable researchers to take the next career step positively and proactively. Harnessing her 30+ years in and around Higher Education – from physicist to training business owner – she speaks, writes and trains on all things researcher development. Her favourite soapboxes include women's development in universities and encouraging researchers to investigate all things enterprising. She brings creativity, empathy and usually a large coffee to her work



Dr Helen Goulding

Helen is the Director of Quercus Training Ltd, a small UK company which trains researchers in professional skills such as career development, personal impact, team working, business awareness and policy making.

She has a degree in earth sciences from the University of Oxford and a NERC-funded PhD in oceanography from the University of Southampton.

Helen's career includes: Department of Trade & Industry running programmes to support public understanding of science grants; science communication and policy for The Wellcome Trust; a senior manager for the Audit Commission; overseeing a £25million science research programme for central Government; Associate Director Projects with Ofgem

Helen set up Quercus Training in 2011, and provides training and coaching to people across Europe and beyond.



Dr Lucy Wallace

Lucy is an experienced communications professional specialising in research engagement, with a particular interest in sharing evidence-based knowledge relating to sustainability. She has a PhD from Glasgow Vet School and 15 years' experience working internationally with a range of organisations from academia, the public, private, and not-for-profit sectors to communicate ideas and enhance engagement with research.

She is Director of Wallace Research Communications, which involves providing consultancy in communications planning and strategy as well as in operational guidance and delivery.

She also has extensive public engagement experience, winning an RCUK award for Science Communication in 2006. She was previously Chair of the Thames Valley Branch of the British Science Association, and during that time she set up and managed Reading Science Festival. For this work, she received the Sir Walter Bodmer Award from the British Science Association in 2011.



Our trainers and reviewers



Dr Stephanie Smith

Dr Stephanie Smith is a Teaching and Training Fellow for CENTA with a research background in Plant Sciences, completing her PhD at University of Nottingham and a Postdoctoral Research position at University of Cambridge. After leaving research she worked as a professional Project Manager for both a charitable initiative (Gatsby Plant Science Education Programme) and as a subcontractor for a large, multi-million-pound project for the Department of Health and Social Care, Project Managing the Equipment Workstream for the Rosalind Franklin Megalab in Leamington Spa.



Tony Harrington, Dŵr Cymru Welsh Water

Tony Harrington has developed his expertise and interest in environmental matters through leading a number of multi-disciplinary teams in support of a variety of projects in the oil and gas exploration; civil engineering; water services industries; and from within Government. He is both a Chartered Engineer and Chartered Scientist, and a Fellow at the Chartered Institute of Water and Environmental Management, at the Institution of Civil Engineers, and at the Learned Society of Wales. In December 2011, Tony took up his role of Director of Environment at DCWW, where he leads the Environmental, Innovation, and Science agendas for the business with the objective of providing a safe and sustainable environment for DCWW customers, one which they are proud to hand to future generations. Tony has a number of research oriented Board appointments including that at the UK Water Industry Research Forum (UKWIR). Tony holds a visiting Chair at the School of Biosciences at Cardiff University and also until recent lead Water UK's – 21st Century Drainage programme. He is also a member of the Higher Education Funding for Wales – Research Wales Committee.



Our exhibitors

Click on the logos to find out more about our exhibitors



12.00-
15.00
only



Natural
Environment
Research Council

NERC Student Network



Drop in CV reviews

ADAS, Nature Positive and RSK Carbon & Sustainability are happy to review CVs on a drop in basis - don't forget to bring a printed copy

Photographer

[Nick Robinson photography](#)

Drop in from 10.00 to 14.00 for your professional headshot

